

# SDC-6620AHD

AHD Dome IR CAMERA

TELCA

1/2.8" Sony Exmor CMOS 1024P, 1.4Megapixel



CE FC

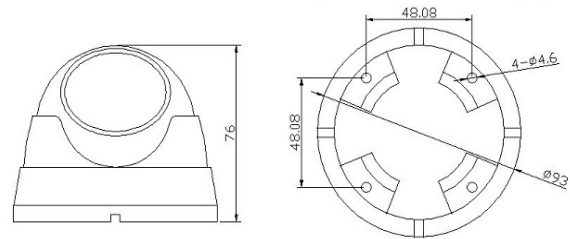
IR CAMERA

## FEATURE

- 1/2.8" Sony Exmor CMOS 1.4Megapixel
- Ø 5mm x 24 PCS. IR LED, Working Distance 20 m
- Vandalproof Aluminium Housing
- Super low illumination 0.03Lux@F1.2



## DIMENSIONS (mm)



## SPECIFICATIONS

Model No	SDC-6620AHD
Image Sensor	1/2.8" Sony Exmor CMOS
TV System	PAL
Resolution	1024P
Effective Pixels	PAL : 1280(H) x 1024(V) / 1.4M
Sync System	Internal
IR LED	Ø 5mm x 24 PCS.
IR Distance	20 M
Lens	Board Lense 3.6 mm/F1.2
Scanning System	Progressive scan method
S/N	More than 50dB (AGC off)
Minimum Illumination	0.03Lux@F1.2
Usable Illumination	0 Lux (With IR LED On)
Auto Gain Control	Auto
Noise Reduction	2D/3D
Video Standard	Comply with HD-AHD
Video Output	1CH CVBS and 1CH AHD output
Video Frame Rate	1280x1024@25fps
Electronic Shutter Time	Auto 4/25 - 1/45,000 Sec
Day/Night	Auto(ICR)/Color/Black-White
Working Temperature	-20 ~ +50 °C RH95% Max
Power Source	DC12V
Dimension	Ø93 x 76(H) mm
Weight	300 g

IR CAMERA